

How the Town Council raises and spends money

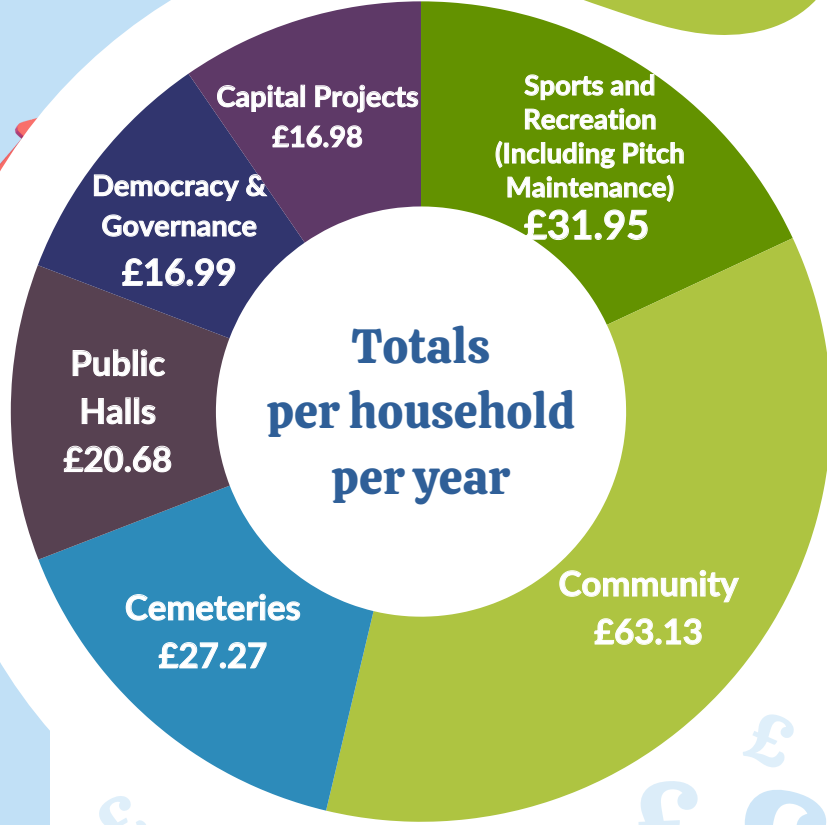


For more information on the precept, visit www.witney-tc.gov.uk

The precept is the main source of income town and parish councils receive and is just 7% of the total Council tax bill paid by residents. The precept is used to deliver, maintain and enhance the services below along with the day to day running of Witney Town Council.

Bank Interest/Charges -£3.25
 Corporate Management £17.16
 Democratic Representation & Management £14.15
 Net Use of Reserves -£11.07

Democracy and Governance



Sports and Recreation

Pitches Splash Park
 Rifle Range Bowling

The Leys (sports pitches & splash park) £15.84
 Burwell QEII Recreation Ground £2.51
 West Witney £2.72
 King George V Recreation Ground £2.10
 Witney Lake and Country Park £8.78

Public Halls

Burwell Hall £8.35
 Corn Exchange £13.38
 Income from Leased Community Halls -£1.05

Capital Projects

£16.98

How much does it all cost?

Cemeteries

Tower Hill Cemetery £10.10
 Windrush Cemetery £15.56
 Closed Churchyards £1.61

Community

Children & Youth Provision £3.69
 Bus Services £1.87
 Other Community Activities including Grants, Events, and Newsletters £13.97
 Allotments, Grass Cutting, Open Spaces, Street Furniture £29.35
 Play Areas/Equipment £4.64
 Civic Activities inc. Remembrance Sunday & events £4.71
 Christmas Lights £4.90

11 Play Areas



Average Band D home contributes **£177** per annum | **£13.90** per month